

Data sheet

Oil Nozzles Type OD

Application

Oil nozzles type OD are designed for domestic and commercial high-pressure oil burners operating with light or heavy fuel. They are available with 4 different spray angles, 3 spray patterns and sizes from 0.20 to 35.0 USgal/h. As to construction and atomizing, the OD nozzle is the basic model for all Danfoss oil nozzles.

Features:

- Light and heavy oil
- EN nozzles from 1.46 to 6.55 kg/h
- Standard nozzles from 0.20 to 35 USgal/h
- 100% test of capacity and performance in accordance with EN

Identification

The EN nozzles 1.46 to 6.55 kg/h are marked with this information. Other nozzles are without EN marking.



Stamped on the flats:

2.37	EN specified capacity (kg/h)
EN 80° II	Spray angle & Angle index (according to EN 293/EN 299)
EN specification point	1000 kPa (10 bar), 3.4 cSt., 840 kg/m ³ Capacity tolerance: ± 4%
	Serial number for internal use
0.60	Reference capacity (USgal/h)
60° S	Spray angle & pattern (H = Hollow, S = Solid, B = Semi-solid)
Reference specification point	700 kPa (7 bar), 3.4 cSt., 820 kg/m ³

Filters

Capacity 0.20 to 0.35 USgal/h: 30 µm sintered bronze	Capacity 0.40 to 0.85 USgal/h: 45 µm sintered bronze
Capacity 1.00 to 1.75 USgal/h: 75 µm sintered bronze	Capacity 2.00 to 11.0 USgal/h: 140 µm monel mesh
Capacity 12.00 to 35.0 USgal/h: without filter	

Recommended tightening torque: 15 to 20 Nm (1.5 to 2.0 kpm).
Max. tightening torque: 25 Nm (2.5 kpm).

Technical data

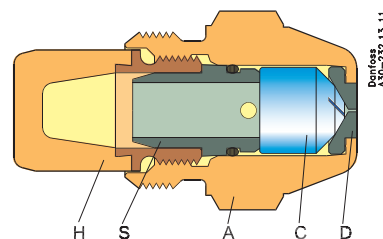
Reference capacity USgal/h	Spray angles/patterns								Specified capacity kg/h		
	30°	45°		60°		80°					
0.20 ¹				S					0.76		
0.25 ¹				S					0.95		
0.30 ¹				H	S		H	S	1.15		
0.35 ¹				H	S		H	S	1.35		
0.40		S		H	S		H	S	1.46		
0.45		S		H	S		H	S	1.66		
0.50	S	H	S	H	S		H	S	1.87		
0.55	S	H	S	H	S		H	S	2.11		
0.60	S	H	S	H	S	B	H	S	B	2.37	
0.65	S	H	S	B	H	S	B	H	S	B	2.67
0.75	S	H	S	B	H	S	B	H	S	B	2.84
0.85	S	H	S	B	H	S	B	H	S	B	3.31
1.00	S	H	S	B	H	S	B	H	S	B	3.72
1.10	S	H	S		H	S		H	S		4.24
1.20		H	S		H	S		H	S		4.45
1.25	S	H	S	B	H	S	B	H	S	B	4.71
1.35	S	H	S	B	H	S	B	H	S	B	5.17
1.50	S	H	S	B	H	S	B	H	S	B	5.84
1.65	S	H	S		H	S		H	S		6.08
1.75	S	H	S		H	S		H	S		6.55
2.00	S	H	S	B	H	S	B	H	S	B	7.42
2.25	S	H	S	B	H	S	B	H	S	B	8.35
2.50	S	H	S	B	H	S	B	H	S	B	9.29
2.75	S	H	S	B	H	S	B	H	S	B	10.5
3.00	S	H	S	B	H	S	B	H	S	B	11.6
3.50	S		S		S			S			12.9
3.75			B		B			B			13.8
4.00		S		S			S				14.2
4.50		S	B	S	B		S	B			16.1
5.00		S	B	S	B		S	B			18.5
5.50		S	B	S	B		S	B			20.9
6.00		S	B	S	B		S	B			23.4
6.50			B		B			B			26.1
7.00				S							27.9
7.50			B		B			B			29.8
8.00				S							31.5
8.50			B		B			B			33.1
9.00				S							35.4
10.00			B		B			B			37.7
11.00			B		B			B			42.5
12.00			B		B			B			47.7
13.50			B		B			B			54.3
15.00			B		B			B			60.4
17.00					B			B			67.4
19.50					B			B			76.2
22.00			B		B			B			86.4
25.00					B						96.7
28.00					B						109.5
31.50			B		B			B			122.5
35.00			B								133.5

EN nozzles
¹Capacity tolerances: ±6%

Design

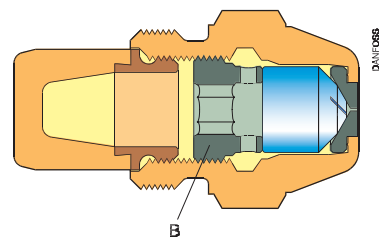
Sizes 0.20-0.60 USgal/h with O-ring sealing

- A. Nozzle housing
- C. Nozzle cone
- D. Orifice disc
- H. Filter
- S. O-ring holder

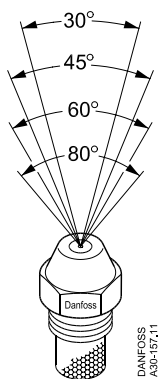


Sizes 0.65-35.00 USgal/h with bottom screw

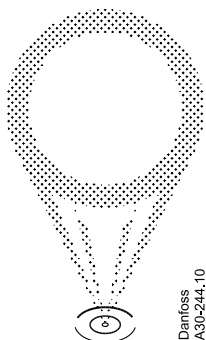
- B. Bottom screw



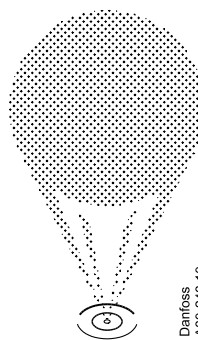
Spray angles



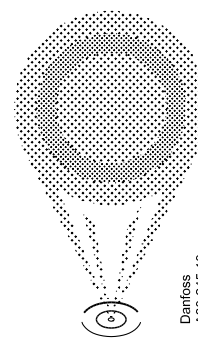
Spray patterns



H (Hollow)

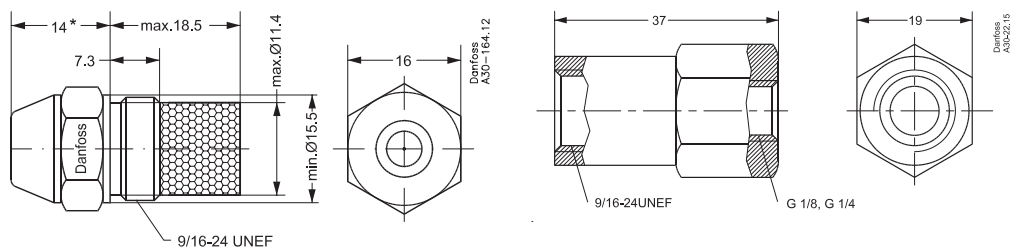


S (Solid)



B (Semi-solid)

Dimensions



*EN standard

Nozzle holder



Additional documentation on burner components is available on <http://heating.danfoss.com/> or <https://store.danfoss.com/>

Danfoss A/S

Heating Segment • heating.danfoss.com • +45 7488 2222 • E-Mail: heating@danfoss.com

Danfoss can accept no responsibility for possible errors in catalogues, brochures and other printed material. Danfoss reserves the right to alter its products without notice. This also applies to products already on order provided that such alterations can be made without subsequential changes being necessary in specifications already agreed.
All trademarks in this material are property of the respective companies. Danfoss and all Danfoss logotypes are trademarks of Danfoss A/S. All rights reserved.
